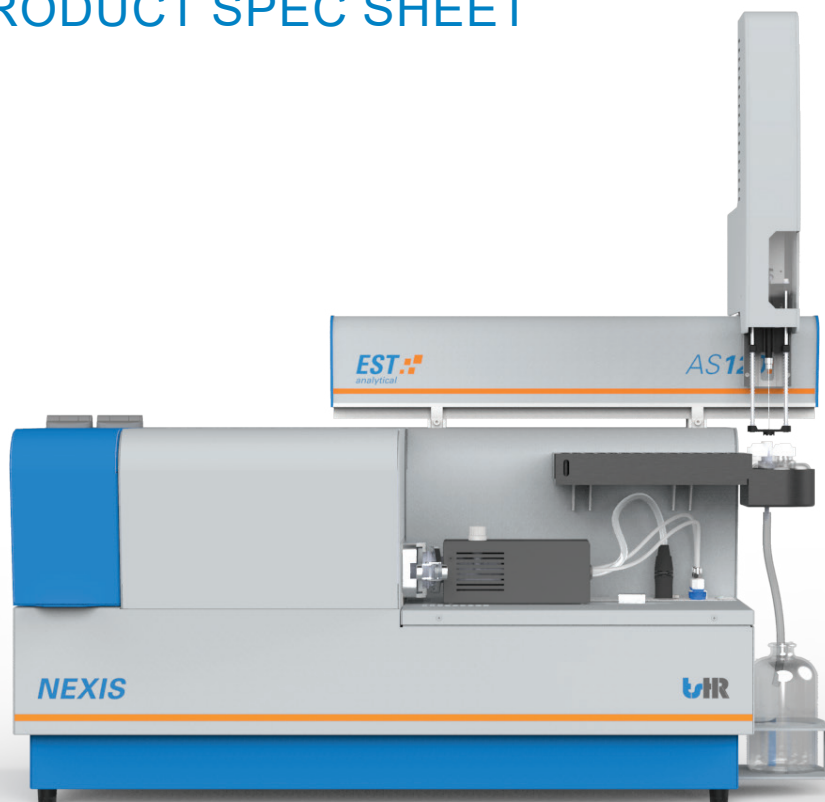


PRODUCT SPEC SHEET

analyzer

NEXIS



The TSHR NEXIS Total Nitrogen/Sulfur/Chlorine analyzer is a horizontal oriented combustion analyzer which enables customers to measure trace level nitrogen/sulfur/chlorine concentrations in a wide range of liquids, solids and LPG/ Gas sample types. The NEXIS TN/TS analyzer configuration detects these substances through a uniquely high effective NEX-Z™ combustion tube design that includes Ultra Violet Fluorescence (UVF) and Chemiluminescence (CLD) detection techniques, while Total Chlorine is detected by Micro Coulometry (MCT) with an add-on module.

Key advantages

Accurate, Fast and Reliable
Total Nitrogen/Sulfur/Chlorine Data

Unique horizontal NEX-Z™
furnace tube design for
effective complete combustion

AS120 Liquid & Solids autosampler
capability to support
high sample throughput labs

High efficiency boat cooling option
for analyzing a wide range of liquid
samples within 6 minutes

REGULATORY METHODS COMPLIANCE

Total Sulfur

- ASTM D5453
- EN ISO 20846
- ASTM D6667
- ASTM D7183
- ASTM D7551
- ASTM D3120
- ASTM D3246
- EN 15486
- IP 490
- UOP 987
- UOP 989

Total Nitrogen

- ASTM D4629
- ASTM D5762
- ASTM D5176
- ASTM D7184
- DIN 51444
- GB/T 17674
- UOP 936
- UOP 981
- JIS K 2609

Total Chlorine

- ASTM D4929
- ASTM D5194
- ASTM D5808
- ASTM D6721
- ASTM D7457
- UOP 779
- UOP 910
- EN 14077



TECHNICAL SPECIFICATIONS

Furnace Voltage	2 x 24 V , 50/60 Hz
Furnace Power	2 x 300 W
Furnace Temperature Sensor	2 x Ni-Cr/Ni
Furnace configuration	Dual temperature controlled
Furnace Temperature	1150 °C Max
Gasflow Control	MassFlowControllers (MFC)
Detection Principle	TN: Chemiluminescence (CLD) TS: UV-Fluorescence (UV-F) TX/TS: Micro-coulometry (MCT)
Dimensions	Main instrument TN/TS: 760 x 390 x 430 mm 30 x 15 x 17 inches (WxHxD) TX module: 220 x 390 x 430 mm 9 x 15 x17 inches (WxHxD)
PC operating system	Windows 10 or higher
Computer	Intel Core i3 / AMD Phenom or better
Software	NEXIS LINK
Optional Supply	AS120 Liquid Autosampler with 120 positions for 2 mL vials AS120 Solids Autosampler with 45 postions NEXIS GM LPG/GAS Module TRINITY™ Module

ANALYTICAL SPECIFICATIONS

	Liquids Syringe	Boat Inlet
Sample introduction	Syringe Liquid Module	Liquids Boat / Solids Module
Working range TN (CLD)	0,03 - 10,000 mg/kg	0,2 - 10,000 mg/kg
Working range TS (UV-F)	0,03 - 10,000 mg/kg	0,2 - 10,000 mg/kg
Working range TX (MCT)	0,1 - 5,000 mg/kg	0,2 - 5,000 mg/kg
Working range TS (MCT)	0,1 - 5,000 mg/kg	0,2 - 5,000 mg/kg
Sample Matrix	Light liquid hydrocarbons	Heavy liquid hydrocarbons, solids
Quantity of Sample	1 - 250 uL	1 - 40 uL or 0,1 - 100 mg
Analysis Time	3 - 6 minutes	4 - 10 minutes
Relative Standard Deviation*	< 2% (> 1 ppm)	< 5% (> 1 ppm)

**Depends on typical application and sample matrix*

FACILITY REQUIREMENTS

Voltage	115/230 V , 50/60 Hz
Power	1200 W
Gas connector	1/8" swagelok
Gasses	O ₂ (99,6%) medical grade 2.6 or O ₂ (99,995%) 4.5 Ar (99,998%) technical grade 4.8
Gas pressure	2 – 3 Bar (30-45 psi)
Ambient temperature	5 – 35 °C (41 – 95 °F)

CONTACT INFO

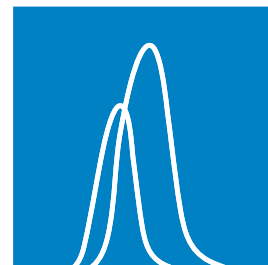
E-mail: sales.tshr@estanalytical.com

TSHR website: www.tshrbv.com

Visit our website to find your local TSHR distributor



YOUR PARTNER IN COMBUSTION ELEMENTAL ANALYSIS



000.TSHR.PS.NXH1.1